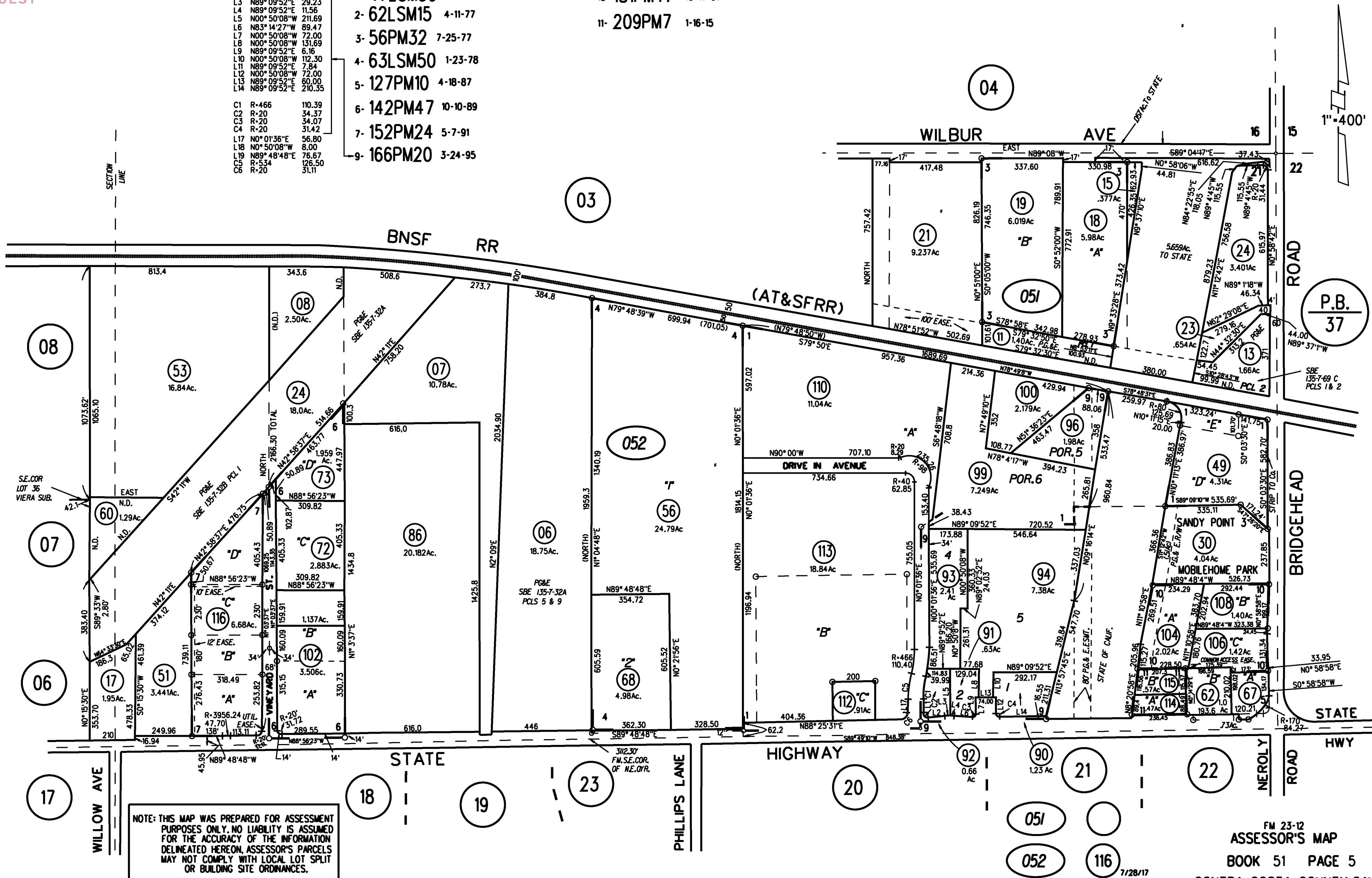


N 1/2 SEC 21 & POR N 1/2 SEC 20 T2N R2E MDBM

L1	N00°01'36"E	54.95
L2	N81°34'11"E	87.72
L3	N89°09'52"E	29.23
L4	N89°09'52"E	11.56
L5	N00°50'08"W	211.69
L6	N83°14'27"W	89.47
L7	N00°50'08"W	72.00
L8	N00°50'08"W	131.69
L9	N89°09'52"E	6.16
L10	N00°50'08"W	112.30
L11	N89°09'52"E	7.84
L12	N00°50'08"W	72.00
L13	N89°09'52"E	60.00
L14	N89°09'52"E	210.35
C1	R-466	110.39
C2	R-20	34.37
C3	R-20	34.07
C4	R-20	31.42
L17	N0°01'36"E	56.80
L18	N0°50'08"W	8.00
L19	N89°48'48"E	76.67
C5	R-534	126.50
C6	R-20	31.11

- 1- 47LSM50 5-3-67
- 2- 62LSM15 4-11-77
- 3- 56PM32 7-25-77
- 4- 63LSM50 1-23-78
- 5- 127PM10 4-18-87
- 6- 142PM47 10-10-89
- 7- 152PM24 5-7-91
- 9- 166PM20 3-24-95
- 10- 181PM47 10-17-01
- 11- 209PM7 1-16-15



NOTE: THIS MAP WAS PREPARED FOR ASSESSMENT PURPOSES ONLY. NO LIABILITY IS ASSUMED FOR THE ACCURACY OF THE INFORMATION DELINEATED HEREON. ASSESSOR'S PARCELS MAY NOT COMPLY WITH LOCAL LOT SPLIT OR BUILDING SITE ORDINANCES.